

---

# INSIDE YOUR WELFARE UNIT



Here is a guide to the non-electrical features of your Deep Green welfare unit. See Manual Section 5 for a guide to all electrical features.

# 6

## 6.1 DRINKING WATER

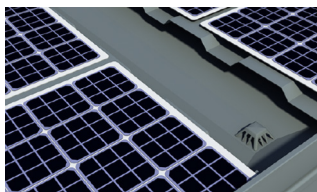


The unit is equipped with a 20L drinking water tank with a tap. This is stored in a wall bracket in the kitchen area of your canteen. During towing, the tank should be empty. To fill, lift the tank from its bracket, fill with either tap or bottled water fit for human consumption, replace the cap. Place the tank back in its bracket and secure with the strap if one is provided. The container must only be used for drinking water and must be emptied and cleaned regularly. If used for any other purpose it must be replaced.

### CAUTION

The water tank weighs approx. 20kg when full. Take care while lifting. To prevent injury, use suitable lifting techniques or seek assistance when replacing.

## 6.2 FRESH WATER TANK



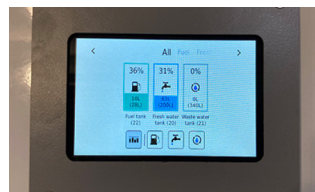
Fresh water for the Hand Wash units is stored in a tank in the base of the cabin. This is filled in two ways.

1) Via the rain water harvesting system. Rain is captured on the roof, sieved for debris and fine particles, sterilised and fed into the fresh water tank.



If there is not enough rain to keep the tank filled, it can be topped up via the black filler cap on the side of the unit door. To undo the filler cap, use the tool provided. Always fill with clean fresh water.

The fresh water tank level should be checked daily using the gauge in the Canteen.



### CAUTION

It is important to never let the water tank run dry as otherwise, damage may be caused to the immersion heater.

The water level can be checked using the gauge on the wall in the Canteen. The water tank level can also be checked remotely using the SOLARTrack™ system.



It is essential to drain the fresh water tank of a 16ft Deep Green unit before towing. To empty the fresh water tank in either a 16ft or 12ft unit, locate the drain for the clean water tank on the underside of the trailer. Use a suitable tool to remove the drain plug from the tank. Make sure the cabin is in a suitable place to allow the water to run away or use a container to catch the water then dispose of it. Replace the drain plug.



To empty the fresh water tank in a 20ft or 24ft unit, locate valve for the tank drain inside the cupboard under the desk in the Office. When you open the rainwater tank drain valve, water from the tank will run out from an outlet beneath the cabin. Make sure the cabin is in a suitable place to allow the water to run away or use a container to catch the water then dispose of it. Close the valve after emptying.



If you ever want to stop rain water entering the fresh water tank (for roof cleaning purposes etc.), locate the red rain water valve in either Drying Room or Toilet. Turn it to the correct position so water from the roof is prevented from entering the tank and instead flows through the downpipe away to the ground beneath the cabin. When finished, remember to turn the valve back to allow rain water to again enter the tank.

### CAUTION

Do not attempt to tow the 16ft Deep Green unit with a full water tank as it may become unstable. Always empty the fresh water tank before towing.

### NOTE

12ft, 20ft and 24ft Deep Green welfare cabins are designed so that they may be towed with a full tank of water. It is not necessary to empty the fresh water tank prior to transporting. The fresh water tank of 16ft units must be emptied before towing.

## 6.3 WASTE WATER TANK - CANTEEN

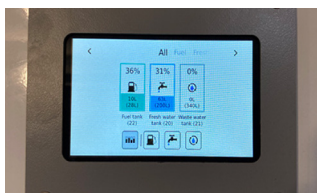


Waste water from the sink in the Canteen is drained into the waste water container beneath it. This should be emptied regularly. When you wish to empty it, remove the drain tube that runs from the sink into the tank and replace the tank cap. Lift the container from its mounting and take for disposal. Refit the empty container and ensure the drain tube from the sink is replaced in the container.

### CAUTION

The Canteen waste water tank weighs approx. 25kg when full. Take care while lifting. To prevent injury, use suitable lifting techniques or seek assistance when replacing.

## 6.4 WASTE TANK - TOILETS



The unit is fitted with an extra-large waste tank. To check how full it is, use the gauge on the wall in the Canteen. The waste tank level can also be checked remotely using the SOLARTrack™ system. If more than 75% full, or before towing, it is essential to book a service visit to empty the tank.



The waste water is pumped out from the point located inside the toilet compartment in the floor. Remove the cover. Connect the equipment to the drain and remove the waste. Replace the cover. If there is stubborn waste in tank, the suction hose may also be inserted into the toilet to pump out waste directly beneath.



### CAUTION

The waste water tank contains biological and chemical toilet waste and should only be removed by suitably trained personnel using specialist equipment. It is an offence to discharge waste into surface or domestic drainage systems.



### IMPORTANT

The waste tank must always be emptied before transporting unit.

## 6.5 DISPENSERS



Place your hand beneath the unit and press the button to dispense soap. The soap dispenser uses 2 litre sealed pouch cartridges to minimise spillage, waste and cross-contamination. Follow the manufacturer's instructions to replace the soap cartridges.



The paper towel dispenser dispenses C or Z fold towels. Place your hand beneath the unit and push the bar upwards to dispense towels. Follow the manufacturer's instructions to replace the towels in the dispenser.



To dispense cups pull the exposed part of the cup from the bottom of the dispenser. To re-fill open the top and insert cups. Please remember the environment and fill with paper cups, not plastic.

## 6.6 FOOD PREPARATION



The unit's food preparation area is supplied as standard with a kettle to make hot drinks and a microwave for hot food preparation. For information on how to power these appliances correctly according to your electrical specification, see Section 5 of the manual.

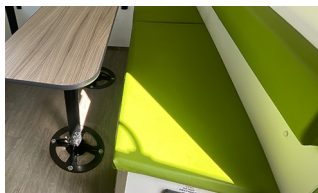
## 6.7 CARBON MONOXIDE ALARM



The cabin is fitted with an audible carbon monoxide alarm. If the alarm sounds, leave the unit immediately. Turn off the cabin and evacuate it. If necessary take specialist advice to determine the source of the contamination. Do not re-enter the cabin until it is safe to do so.

The monitor should be tested at regular intervals. Please refer to the Manufacturer's Operating Manual for instructions on how to carry out these tests.

## 6.8 BENCH SEATING



The seat pads of the bench seating in the Canteen may be cleaned by wiping down with clean water and a mild detergent. All the bench seat pads can be lifted off for deeper cleaning.

Stored within some benches is electrical equipment such as the batteries, RCD board, hydraulic ram machinery, air-blown heating ducts etc.

## 6.9 WINDOWS AND SHUTTERS

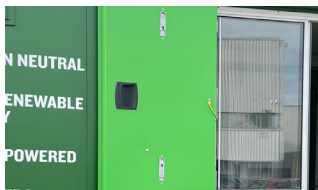


There are several sliding windows in your cabin. To open the windows, release the latches by flipping the catch down and slide the glass panel open.



### CAUTION

**When leaving the unit unattended and when towing ensure the security shutters are closed and all windows are shut and latched.**



The windows are protected by steel security shutters which are locked internally and can only be opened from inside the unit. To open the shutters, flip the bottom lockbolt so it is in a downward position and flip the top one so it is in an upwards position. Then push the shutters open. There is a catch on the outside of the unit to hold them back in position.

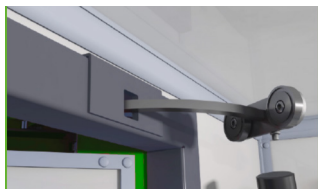
To lock the shutters, reverse the procedure.



### CAUTION

**The security shutter is heavy and may move suddenly if on uneven ground or when windy. Take care to avoid trap injuries to hands and fingers when opening or closing the shutters.**

## 6.10 MAGNETIC DOOR STAYS



### NOTE

**Unlike traditional metal door stays where you have to remember to disengage the stay, with the magnetic stay there is no risk of damage either to the stay or to the door if the door is slammed or pulled with too much force.**

You will notice your cabin is fitted with magnetic door stays. These are robust magnetic mechanisms for holding the door open. In the fully open position, the stay will engage automatically. To close the door, disengage the mechanism simply by firmly pushing or pulling the door towards its closed position.



### CAUTION

**Beware of the step when leaving the cabin.**

## 6.11 DOOR LOCKS



The cabin doors are locked by moving the slider to the locked side and then locking with the key provided.